

Introduction:

Thank you for purchasing a Spa Power Variable Speed Blower (SPVSB). This blower has been designed to provide superior flexibility of control and ease of use. It makes use of the latest surface mount electronics and switch mode power control.

Models:

The SPVSB comes in two basic models.

The 5603 model can be used with the 3 button or 1 button dedicated control panels or it can be controlled directly by a Spa Controller.

The 5602 model can only be controlled directly by a Spa Controller.

Operating Instructions: 3 button touchpad

Four pushes on the centre button (1) cycle the blower as follows...

Push 1 =

Blower on full speed. (Red light (2))

Push 2 =

Blower on adjustable speed. (Orange light)

Push 3 =

Blower on oscillating speed. (Oscillating lights)

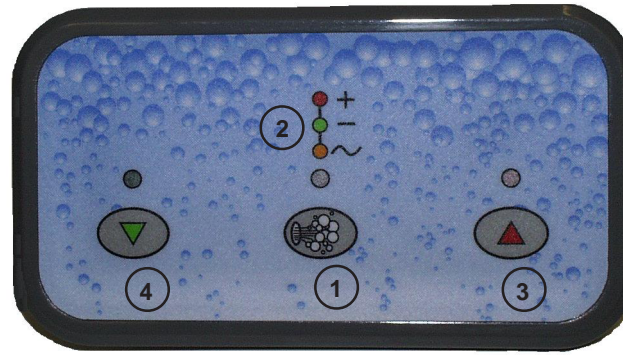
Push 4 =

Blower off. (light off). (back to default state).

When in the adjustable speed setting, the Up and Down (3 & 4) buttons can be used to set the desired blower intensity.

When in the oscillating speed setting, pushing the UP or Down button will return the system to the adjustable speed setting described above.

If left on, the SPVSB will automatically switch off after 30 minutes.



Operating Instructions: 1 button touchpad

Four pushes on the button (5) cycle the blower as follows...

Push 1 =

Blower on full speed. (Red light (6))

Push 2 =

Blower on medium speed. (Orange light)

Push 3 =

Blower on oscillating speed. (Green light)

Push 4 =

Blower off. (light off). (back to default state).

If left on, the SPVSB will automatically switch off after 30 minutes.

Operating Instructions: Spa Controller

The SPVSB can be controlled directly from the later Spa Power spa control systems so that the whole spa system is operated from the spa controller touchpad. In this case the SPVSB does not use a dedicated touch pad of its own.

Spa Power spa control systems operate the blower in a similar manner to that described earlier for the 3 button touch pad but details vary from one system to another. See the spa controller user guide for information on how a particular system controls the blower.

Switching on the SPVSB from a spa controller touch pad may cause the spa heater to switch off (loadshedding). This is in order to keep the total current load of the spa to a safe level.

Safety Notes:

Before using ensure that the spa pool has been connected to a suitable weather protected outlet socket, equipped with a double poll isolating switch, which is of the correct rating and complies with the local wiring regulations.

When installing refer to your local wiring code. In particular refer to ECP 2 & ECP 25 (AS / NZ) and EN 60364-4-1 & EN 60364-7-1 (EU). The system must be installed in such a way that live parts are not accessible by a person in the pool.

This appliance is not intended for use by young children or infirm persons without supervision. Young children should be supervised to ensure that they do not play with the appliance.

Self Diagnostic Error Codes:

The Spa Power Variable Speed Blower has self diagnostic capabilities. In the event of a problem it will indicate an error number using beeps and a flashing light on the panel. The error numbers and their meanings are listed below.

Error 1 is not used.

Errors 2 & 3 are latching errors.

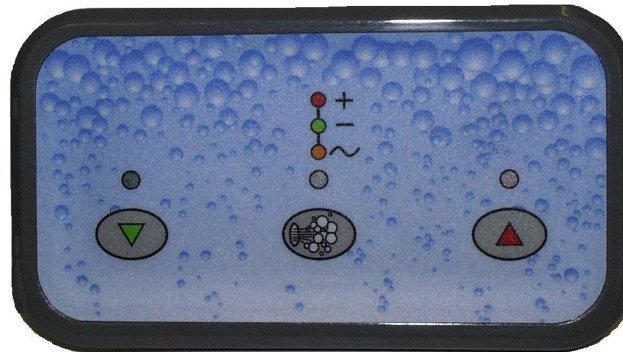
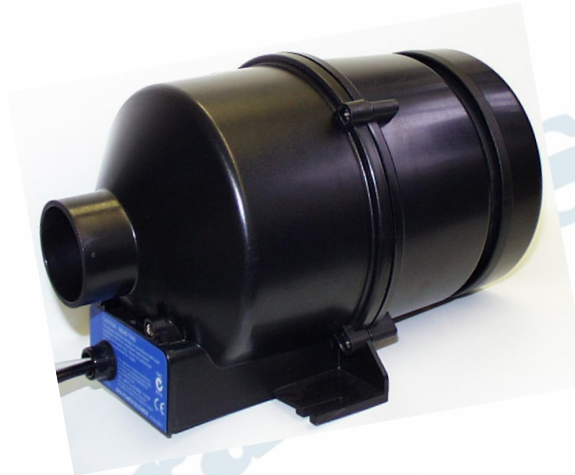
Operation will stop and will not continue until the unit is reset (switched off and on again at the power supply).

Error 2 = NO INTERRUPTS

This error indicates that no timing reference signal from the blower is being received at the control panel. This may be caused by damage to the cable or by a problem with the circuitry in the blower.

Error 3 = STUCK BUTTON

This error indicates that one of the buttons in the control panel is stuck or has been held down for more than one minute. This may be caused by water getting into the panel or by damage to the control panel or its cable.

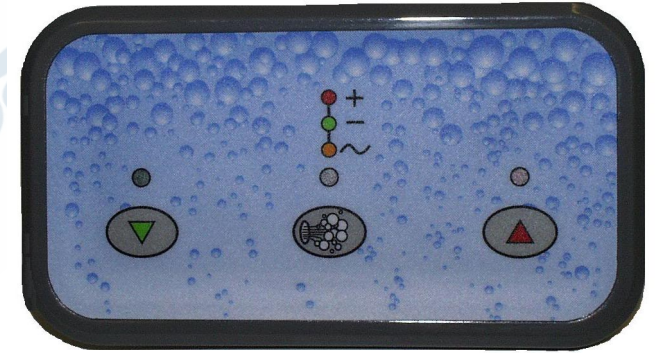


Warning:

If the supply cord gets damaged the unit should be returned to the manufacturer or approved service agent or similarly qualified person to be repaired.

QUICK CARD USER GUIDE SPA POWER VARIABLE SPEED BLOWER (SPVSB)

*Please read these instructions carefully
before use*



SPA-QUIP

Spa-Quip (Australia) Pty Ltd
Unit 2A, 4 Hudson Ave
Castle Hill NSW 2154
Ph (612) 9634 5600, Fax (612) 9634 5900
Email: service@spa-quip.com.au
Web site: <http://www.spa-quip.com.au>

Manufactured by: Spa-Quip Ltd
Cnr Rothwell Ave & Albany Hwy
North Harbour Industrial Park
Auckland, New Zealand
Ph (649) 415 8622, Fax (649) 415 8621
Email: service@spa-quip.co.nz
Web site: <http://www.spa-quip.co.nz>